

4

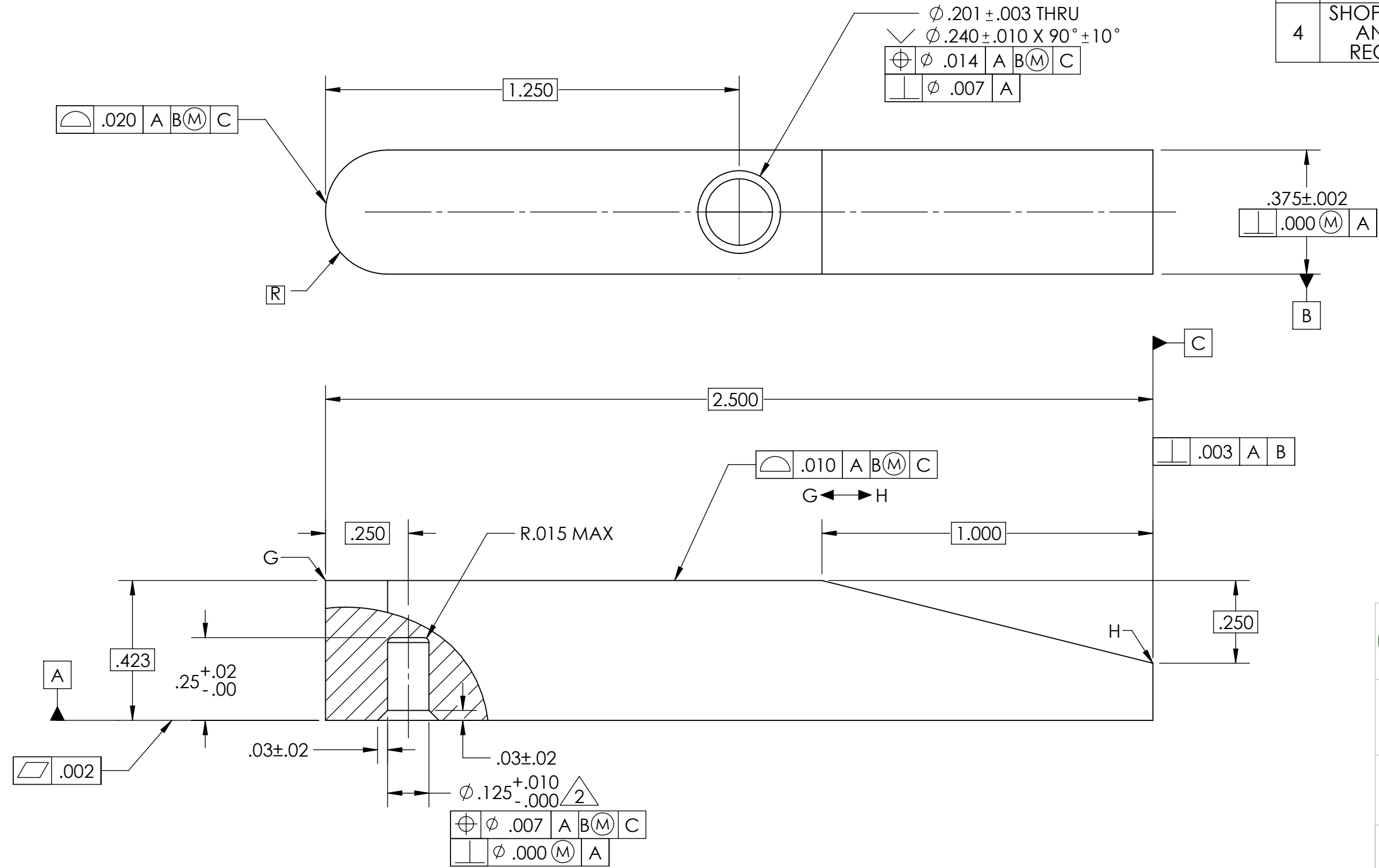
3

2

1

- 1. SURFACE ROUGHNESS EXCLUDING THREADS 63 MICROINCHES OR BETTER UNLESS OTHERWISE SPECIFIED.
- 2. DRILL POINT NOT PERMITTED.

#	SPECIFICATIONS:	
1	DIMENSIONS AND TOLERANCES	ASME Y14.5-2009
2	DRAWING INTERPRETATION	ASME Y14.100-2017
3	STANDARD SIZES AND FITS	MACHINERY'S HANDBOOK 30TH EDITION
4	SHOP TOLERANCES AND DEFAULT REQUIREMENTS	HVCC AMT DRAWING #: H028P1



DRAWING TITLE:
JAW, MACHINIST CLAMP

DRAWING NUMBER:
H040P3

DRAWN BY: DEAN ODELL

ITEM NO.	PART NUMBER	MATERIAL	DESCRIPTION	QTY.
1	H040P3	AISI 1020	JAW, CLAMP, CLEARANCE	1

SIZE **B** Class: **MFTS** REV -

SCALE: 2:1 DATE: 5/17/2021 SHEET 1 OF 1

4

3

2

1