

4

3

2

1

1 THESE DIMENSIONS DO NOT APPLY TO H040P4.

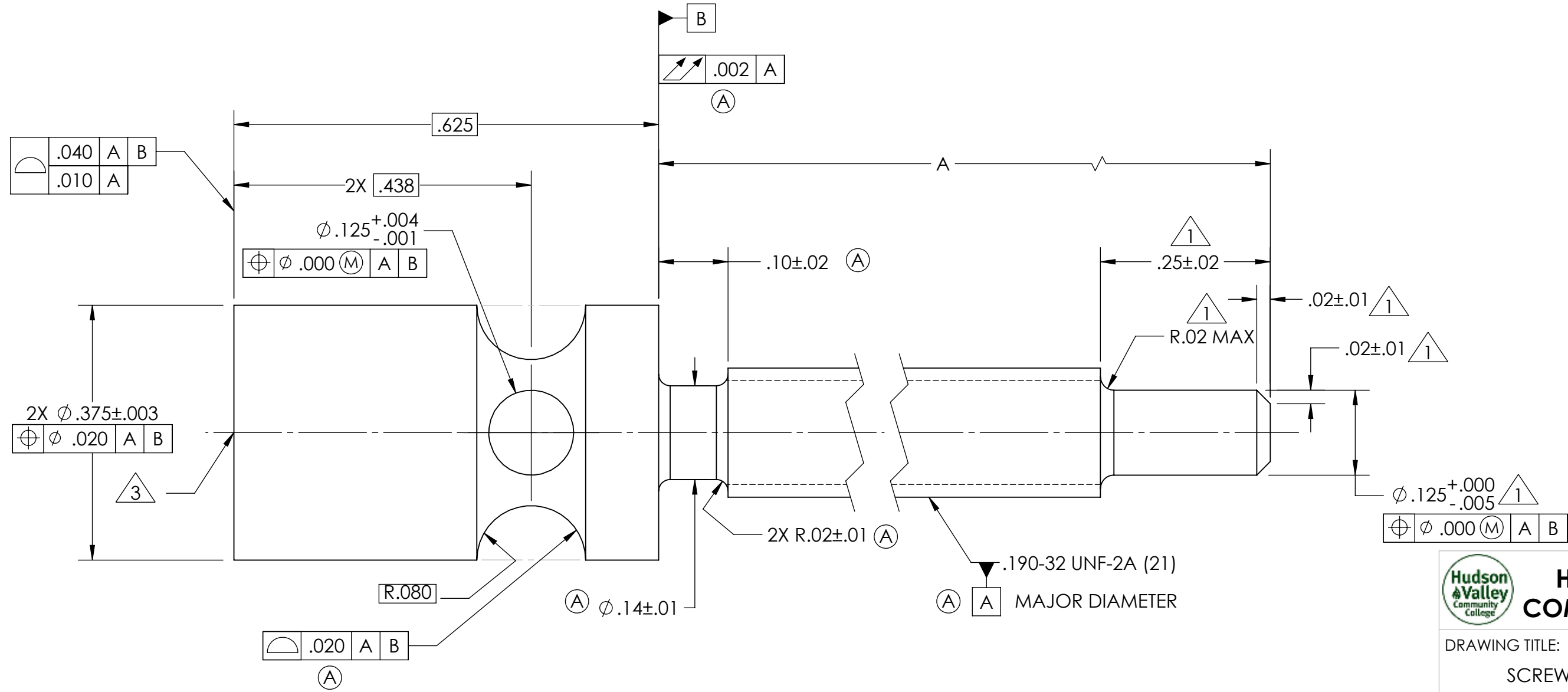
2 H040P2 A=2.50±.02
H040P4 A= 2.25±.02

3 MACHINING CENTER NOT PERMITTED

4. SURFACE ROUGHNESS EXCLUDING THREADS
63 MICRINCHES OR BETTER UNLESS OTHERWISE SPECIFIED.

REVISIONS				
ZONE	REV.	DESCRIPTION	DATE	APPROVED
A2, A3, A4, B3	A	CHANGED TOLERANCES	5/19/2021	

#	SPECIFICATIONS:	
1	DIMENSIONS AND TOLERANCES	ASME Y14.5-2009
2	DRAWING INTERPRETATION	ASME Y14.100-2017
3	STANDARD SIZES AND FITS	MACHINERY'S HANDBOOK 30TH EDITION
4	SHOP TOLERANCES AND DEFAULT REQUIREMENTS	HVCC AMT DRAWING #: H028P1



HUDSON VALLEY COMMUNITY COLLEGE

DRAWING TITLE:
SCREW, MACHINIST CLAMP

DRAWING NUMBER:
H040P2

DRAWN BY: DEAN ODELL

ITEM	DRW #	DESCRIPTION	MATERIAL
2	H040P4	SCREW, PLAIN	STEEL
1	H040P2	SCREW, INSERT	STEEL

PARTS LIST

SIZE: **B** Class: **MFTS** REV: **A**

SCALE: 2:1 DATE: 5/20/2021 SHEET 1 OF 1

4

3

2

1